

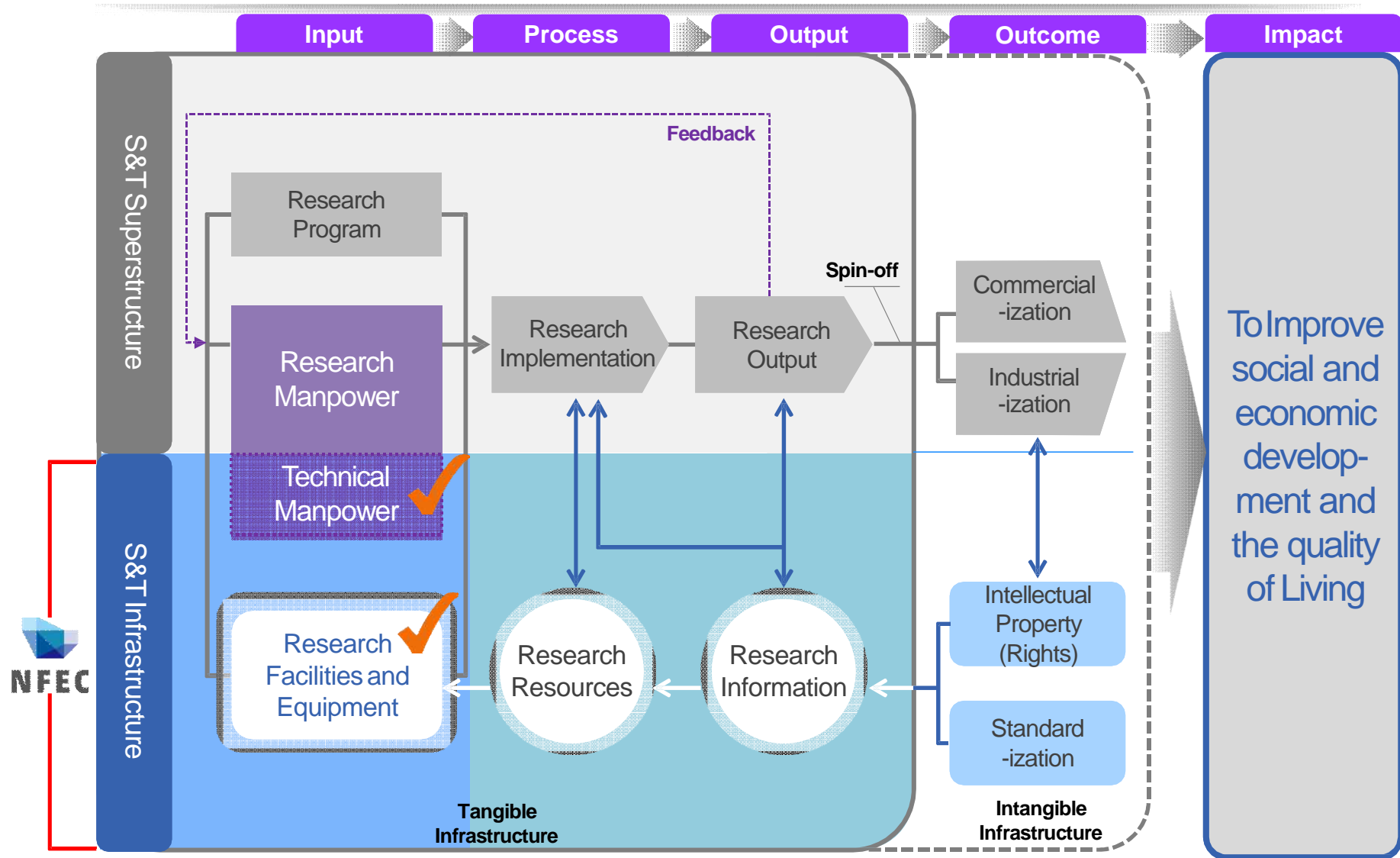
Performance management of Research Infrastructure

13th September, 2018
Vienna, Austria

Chanyoung Jun (cjun2@kbsi.re.kr)

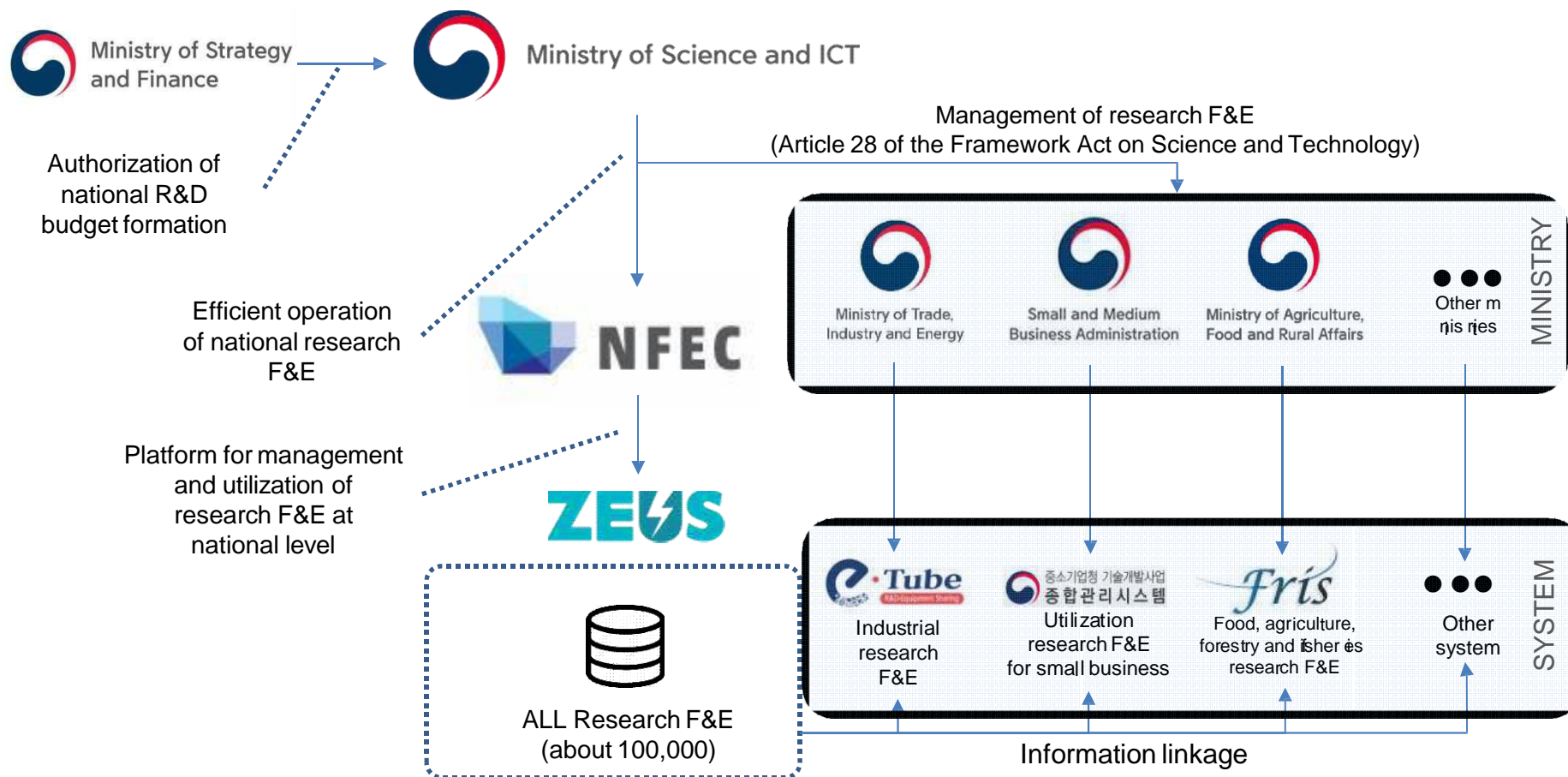
National Research Facilities and Equipment Center(NFEC), Korea

What is S&T Structure?



Source: Dr. You, Understanding on the Concept of Science & Technology Structure, 2008

Effective management for Research Infrastructure



Performance management of RI

Tip of the iceberg

RI

The part of something, the rest of it

Build

Operation

Operating
engineer

Equipment
development

Replacement

Joint research

Performance
improvements

Nurturing
users

Utility

Maintenance

Information
Management

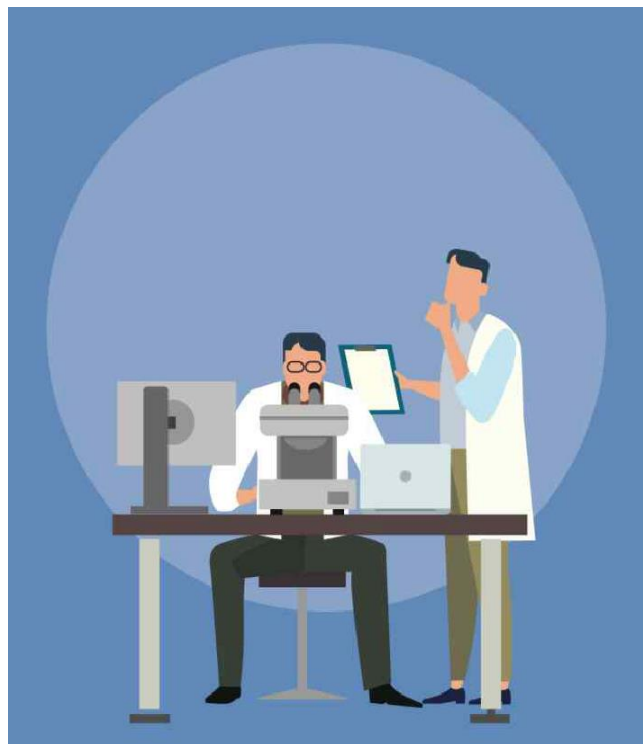


General management of National Research Infrastructure



Management of Research Infrastructure

Research Equipment



For research projects

Check
Scientific effect,
Investment effect

Large-scale Facilities



For large-scale projects

Check
Scientific effect

Core RI



For research supports

Check Scientific
effect,
Economic effect



Onsite visit

Performance measurement of National Core Infrastructure

Evidence for Decision Making

SURVEY

Input Performance

Budget(3)

National project(7)

Equipment(8)

Operator(4)

Output/Outcome Performance

Use Performance(18)

Education Performance(2)

Scientific Performance(4)

Economic Performance(16)

Social Performance(8)

ANALYSIS

General value

Utilization

Contribution

Special value

Test/Analysis

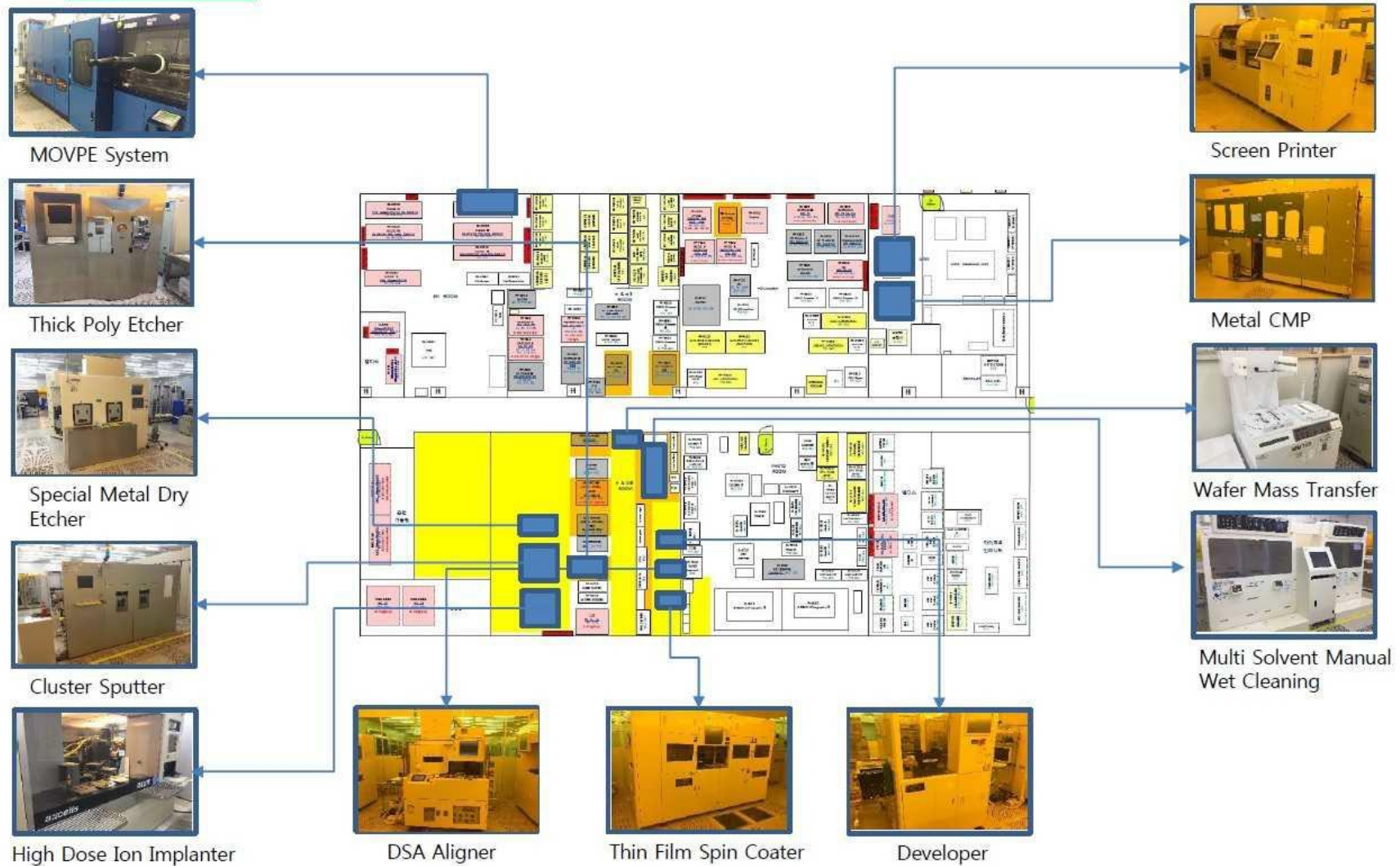
Prototype production

Technical support

Technology spread

Scientific contribution

Transfer support program



Transfer support program



DSA Aligner



Thin Film Spin Coater



Developer

SAMSUNG

JUSUNG
ENGINEERING

DB HiTek

SK hynix

SAMSUNG ELECTRONICS

LG Electronics

Beyond Eyes

OPTOLANE
Technologies Inc.

YNG
OPTICS

150 users

**Companies,
Institutes,
Universities**

Entegris

**CHONBUK
NATIONAL
UNIV.**

KANC
한국나노기술원

**19
Organizations**

tgo (주)티지오테크

philoptics

Sunic system 선익시스템

WISOL 와이솔

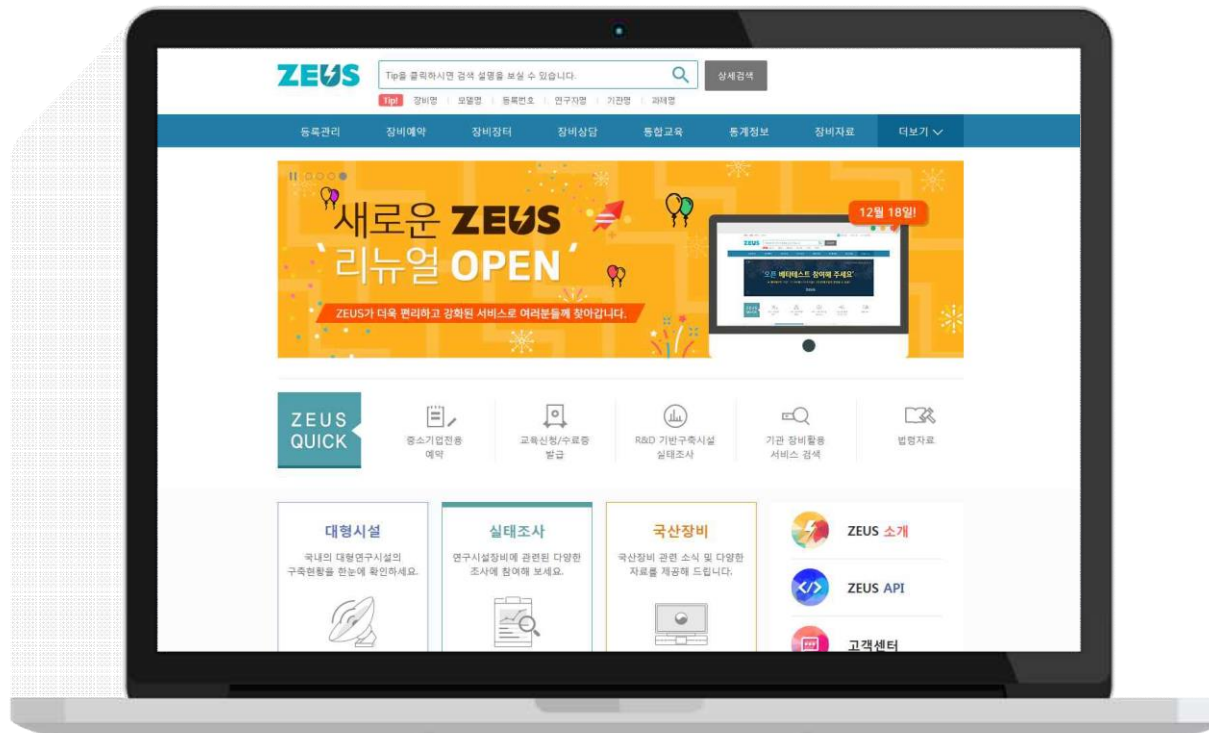
WISE

\$ 61,000

**Prototype
Production
(MEMS
sensor, SAW
filter)**

ZEUS (Zone for Equipment Utilization Service)

<http://www.zeus.go.kr>



**Equipment
Consultation**

**Equipment
Market**

**Equipment
Reservation**

THANK